

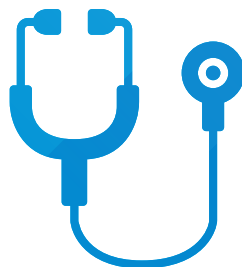


NATIONAL CENTER FOR  
THE MIDDLE MARKET

# HEALTHCARE

MIDDLE MARKET INDICATOR

## Year-End | 2021



IN COLLABORATION WITH

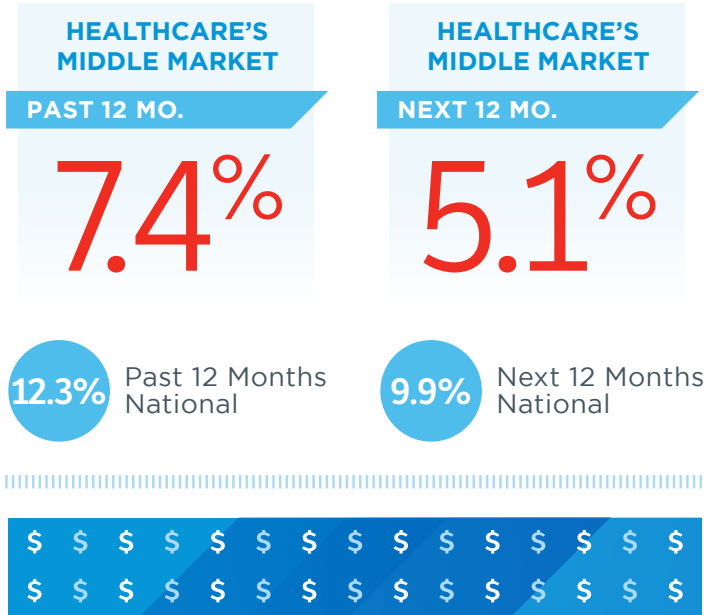


THE OHIO STATE UNIVERSITY  
FISHER COLLEGE OF BUSINESS

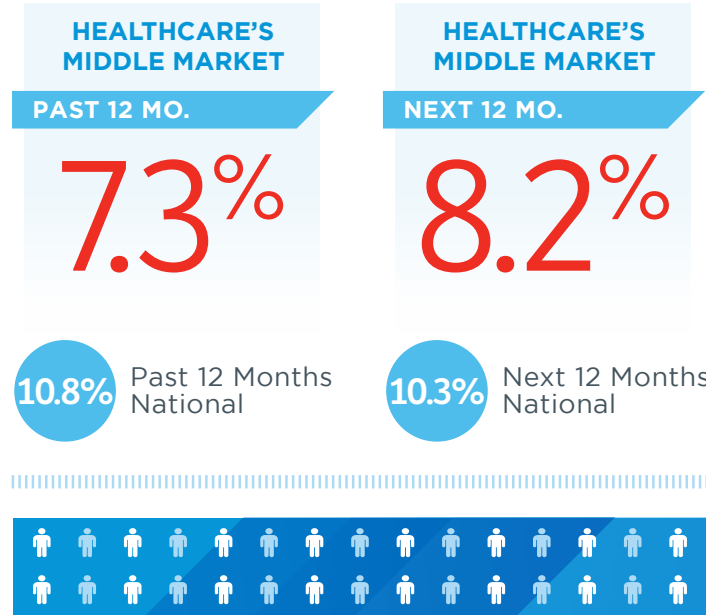
CHUBB®

VISA

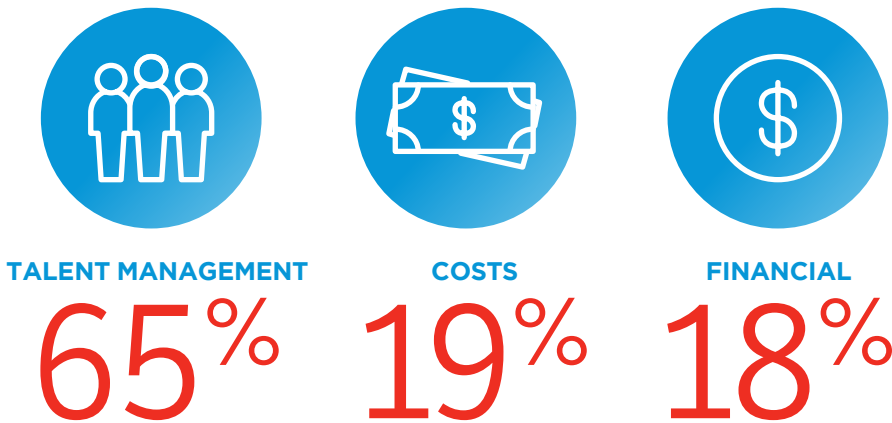
### Healthcare's Revenue Growth vs. National



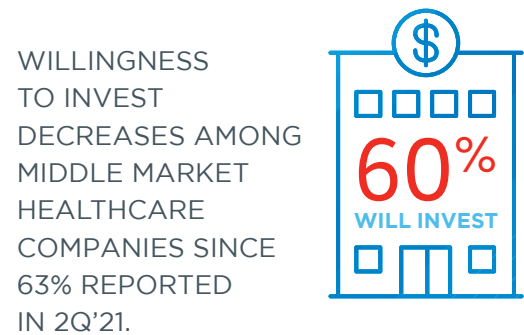
### Healthcare's Employment Growth vs. National



### Healthcare's Top Internal Challenges Over The Next 12 Months



### Preparing for Growth Through Capital Investment



#### VS. NATIONAL MIDDLE MARKET



## Long-Term Negative Impact of COVID-19 on Healthcare vs. Other Industries

	ALL MIDDLE MARKET COMPANIES	BUSINESS SERVICES	MANUFACTURING	WHOLESALE TRADE	RETAIL TRADE	CONSTRUCTION	FINANCIAL SERVICES	HEALTHCARE	TECHNOLOGY*
SUPPLY CHAIN	36%	28%	41%	39%	31%	42%	20%	44%	29%
EMPLOYMENT (I.E., NUMBER ON STAFF)	28%	29%	27%	40%	16%	27%	21%	44%	28%
BUSINESS OPERATIONS	25%	16%	27%	39%	14%	35%	18%	34%	19%
GROWTH INITIATIVES	21%	18%	19%	29%	10%	22%	18%	38%	13%
CAPITAL SPENDING	21%	17%	22%	52%	13%	24%	13%	30%	21%
PAYROLL (I.E., HOURS WORKED)	21%	16%	24%	29%	15%	24%	16%	27%	20%
2022 PROJECTED REVENUE	20%	15%	24%	10%	16%	25%	15%	41%	13%
CUSTOMER DEMAND	19%	15%	25%	17%	14%	20%	15%	24%	14%
WORKING CAPITAL/CASH	19%	13%	22%	34%	10%	23%	13%	28%	18%
ACCESS TO CAPITAL	15%	16%	19%	12%	10%	12%	11%	21%	14%
DIGITAL TRANSFORMATION	13%	12%	15%	20%	5%	8%	10%	23%	11%

Percent of respondents stating they expect a minor or major long-term negative impact from COVID-19

\*Includes companies also represented in other industries, e.g., computer manufacturers, IT services, healthcare, fintech.

## Healthcare's Middle Market Defined

ANNUAL REVENUE  
**\$10 MM-\$1B**



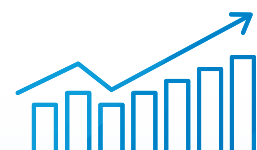
REPRESENTS  
**0.9%**  
OF ALL HEALTHCARE  
COMPANIES

MORE THAN  
**12,700**  
BUSINESSES



EMPLOYS  
**36.8%**  
OF THE HEALTHCARE  
WORKFORCE

GENERATING  
**\$765B**  
IN ANNUAL REVENUE



GENERATES  
**44.1%**  
OF ALL HEALTHCARE  
BUSINESS REVENUE

Source: 2014 D&B Data

Copyright © 2022 The Ohio State University. All rights reserved. This publication provides general information and should not be used or taken as business, financial, tax, accounting, legal, or other advice, or relied upon in substitution for the exercise of your independent judgment. For your specific situation or where otherwise required, expert advice should be sought. The views expressed in this publication reflect those of the authors and contributors, and not necessarily the views of The Ohio State University or any of their affiliates. Although The Ohio State University believes that the information contained in this publication has been obtained from, and is based upon, sources The Ohio State University believes to be reliable, The Ohio State University does not guarantee its accuracy, and it may be incomplete or condensed. The Ohio State University makes no representation or warranties of any kind whatsoever in respect of such information. The Ohio State University accepts no liability of any kind for loss arising from the use of the material presented in this publication.