



NATIONAL CENTER FOR
THE MIDDLE MARKET

TEXAS

MIDDLE MARKET INDICATOR

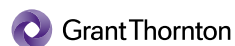
2Q | 2018



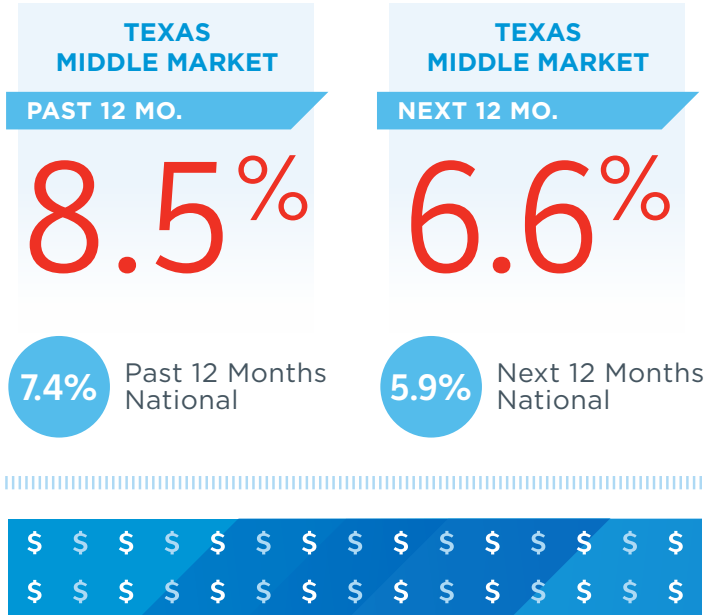
IN COLLABORATION WITH



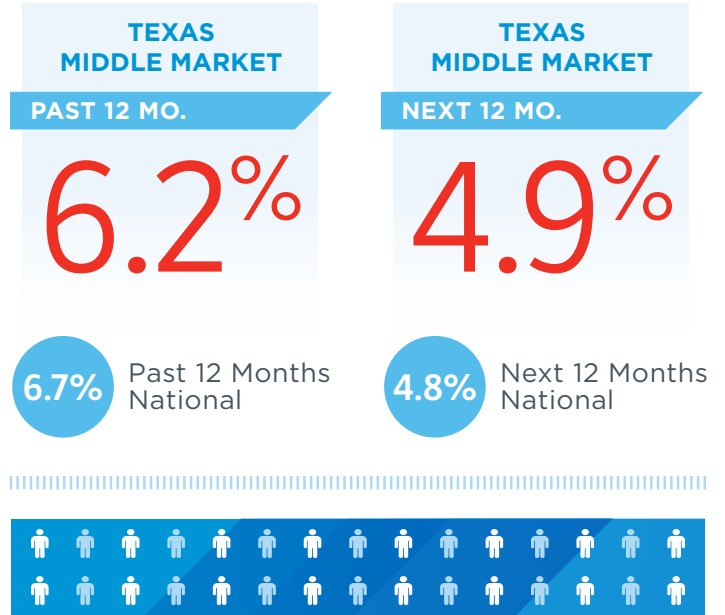
THE OHIO STATE UNIVERSITY
FISHER COLLEGE OF BUSINESS



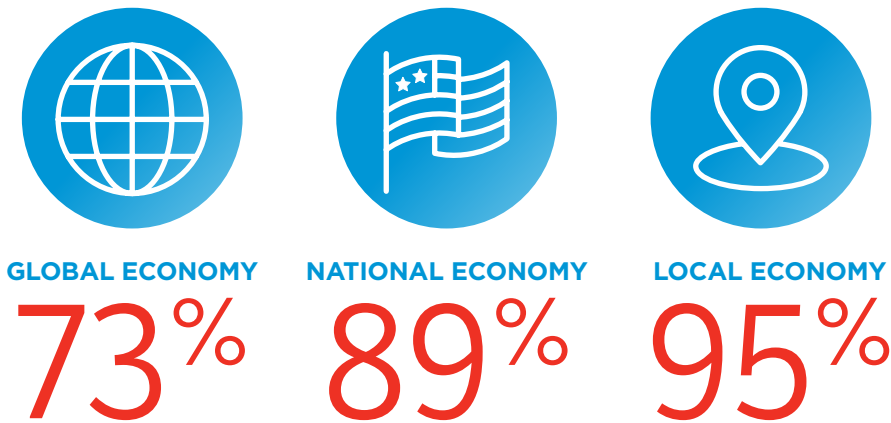
Texas Revenue Growth vs. National



Texas Employment Growth vs. National



Local and National Confidence Is Strong in Texas; Global Confidence Dips



Preparing for Growth Through Capital Investment



VS. NATIONAL MIDDLE MARKET



Texas' Middle Market Defined

ANNUAL REVENUE
\$10 MM-\$1B



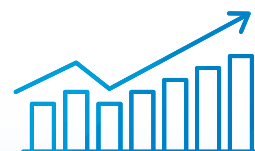
REPRESENTS
0.7%
OF ALL TEXAS
COMPANIES

CONSISTING OF
10,000
BUSINESSES



EMPLOYS
32%
OF THE TEXAS
WORKFORCE

MORE THAN
\$505 B
IN ANNUAL REVENUE



GENERATES
17%
OF ALL TEXAS
BUSINESS REVENUE

Texas' Middle Market is Diverse



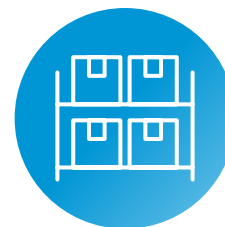
CONSTRUCTION
12.0%



HEALTHCARE
6.8%



RETAIL TRADE
9.1%



WHOLESALE TRADE
13.1%



FINANCE & INSURANCE
6.0%



PROFESSIONAL
SERVICES
8.1%

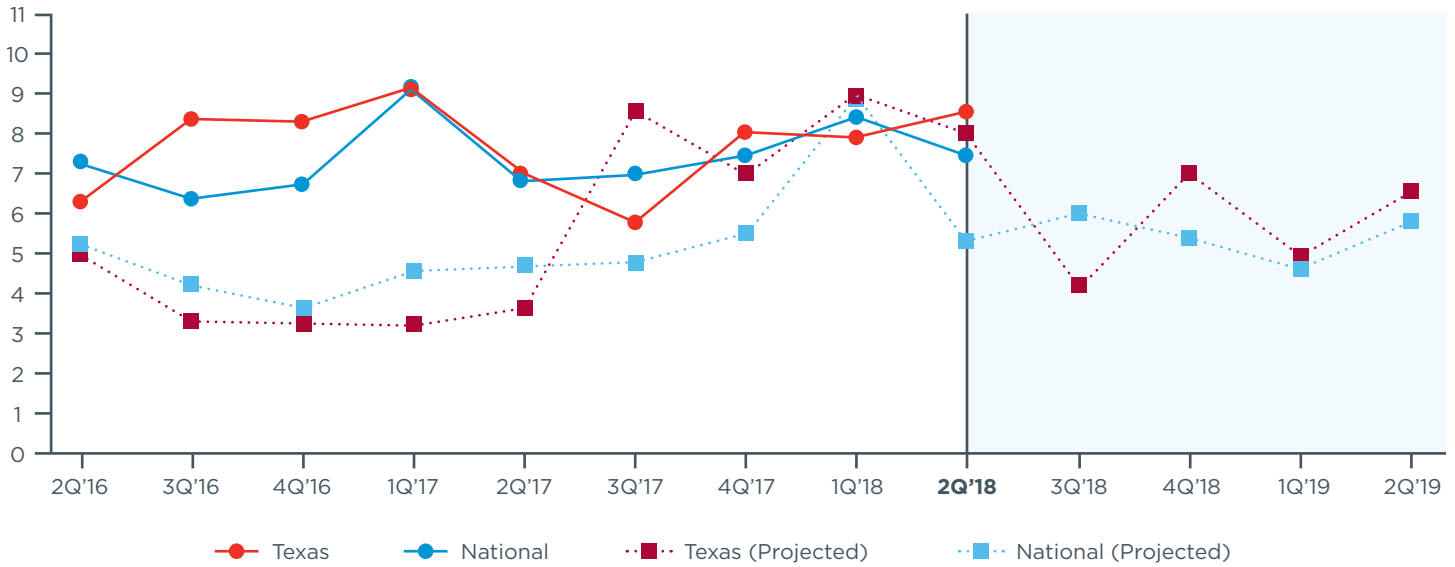


MANUFACTURING
14.0%



TRANSPORTATION
& WAREHOUSING
3.6%

Actual & Projected Revenue Growth



Actual & Projected Employee Growth

