

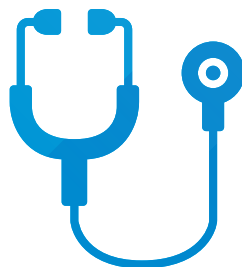


NATIONAL CENTER FOR
THE MIDDLE MARKET

HEALTHCARE

MIDDLE MARKET INDICATOR

1Q | 2019



IN COLLABORATION WITH

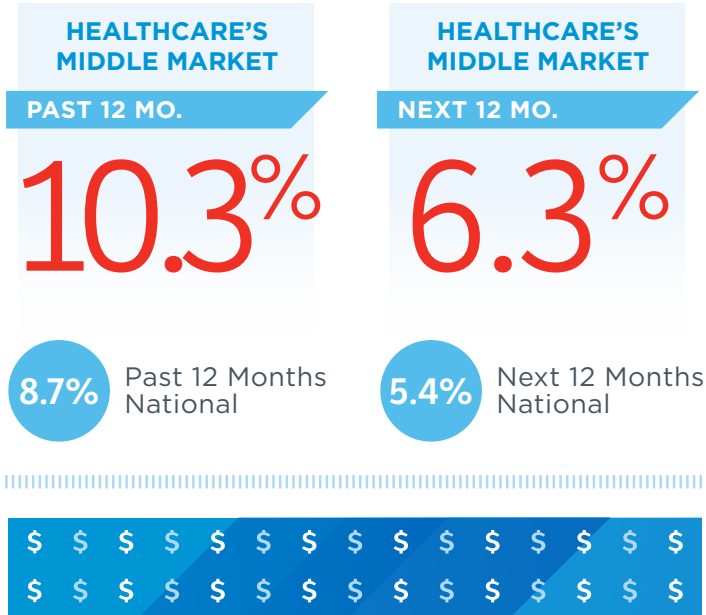


THE OHIO STATE UNIVERSITY
FISHER COLLEGE OF BUSINESS

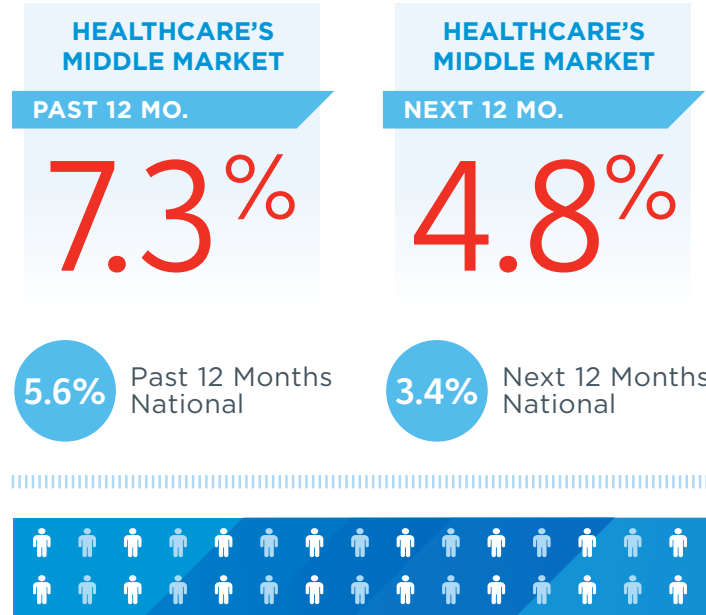


CHUBB®

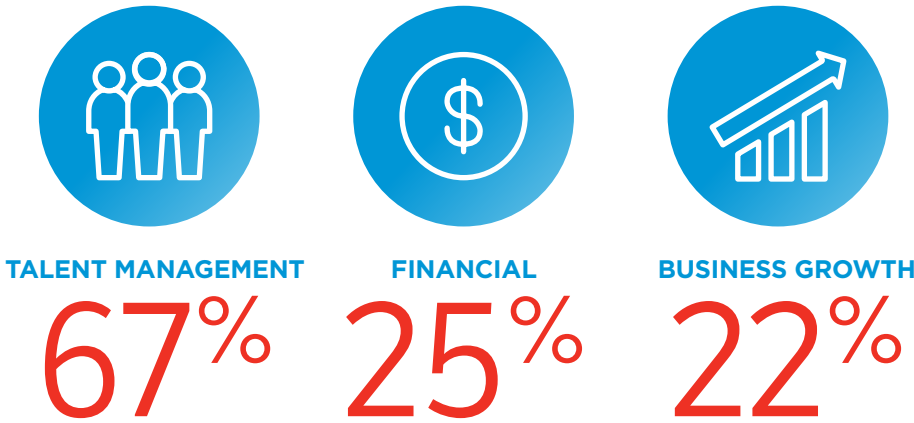
Healthcare's Revenue Growth vs. National



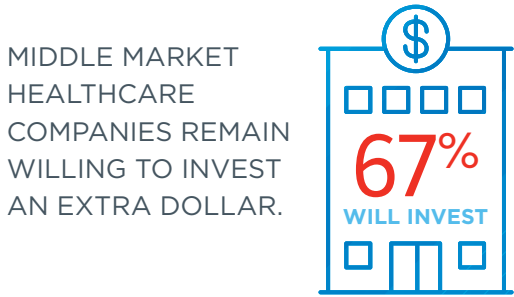
Healthcare's Employment Growth vs. National



Healthcare's Top Internal Challenges Over The Next 3 Months



Preparing for Growth Through Capital Investment



VS. NEXT 12 MONTHS

Talent Management	Costs	Business Growth
50%	22%	18%

Healthcare's Middle Market Defined

ANNUAL REVENUE
\$10 MM-\$1B



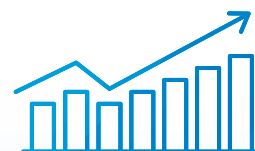
REPRESENTS
0.9%
OF ALL HEALTHCARE
COMPANIES

MORE THAN
12,700
BUSINESSES



EMPLOYS
36.8%
OF THE HEALTHCARE
WORKFORCE

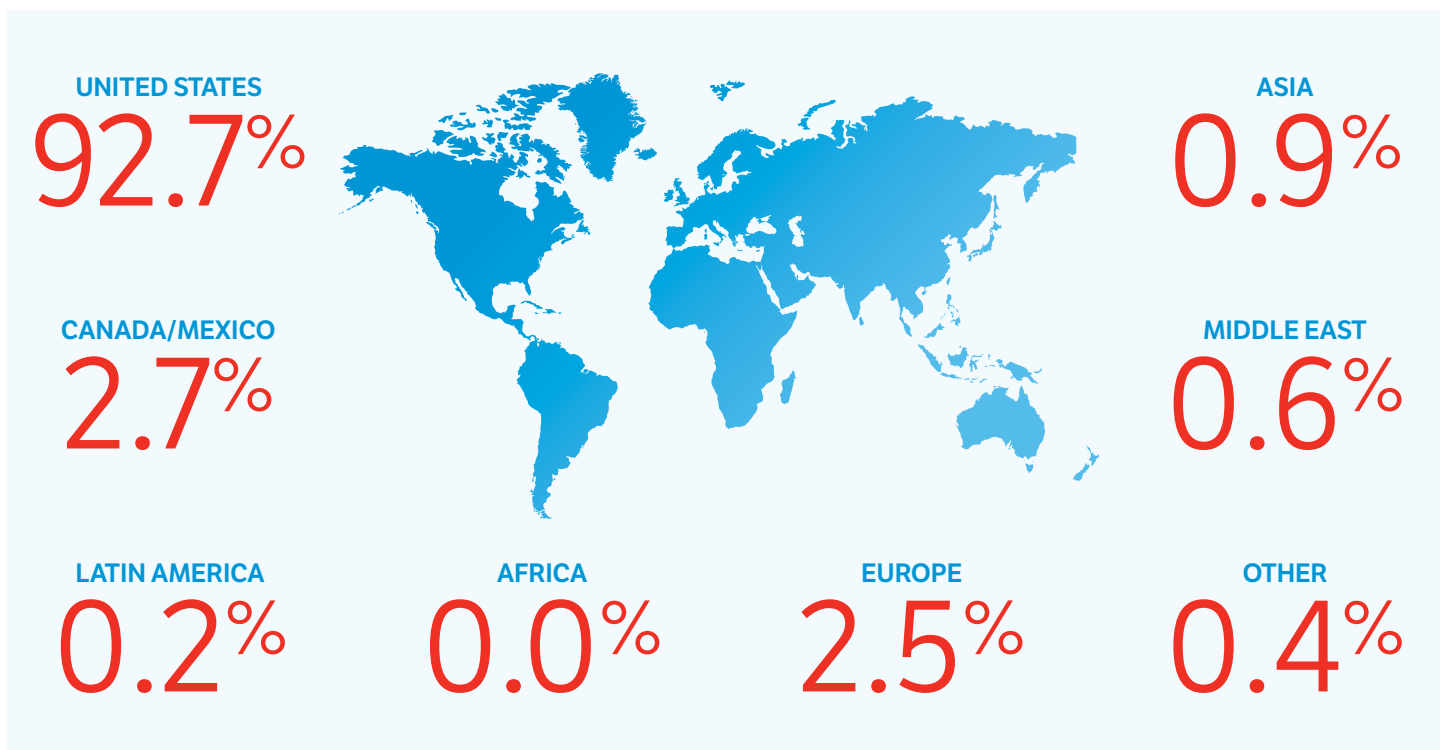
GENERATING
\$765B
IN ANNUAL REVENUE



GENERATES
44.1%
OF ALL HEALTHCARE
BUSINESS REVENUE

Source: 2014 D&B Data

Healthcare's Percentage of Revenues Around the World



Copyright © 2019 The Ohio State University. All rights reserved. This publication provides general information and should not be used or taken as business, financial, tax, accounting, legal, or other advice, or relied upon in substitution for the exercise of your independent judgment. For your specific situation or where otherwise required, expert advice should be sought. The views expressed in this publication reflect those of the authors and contributors, and not necessarily the views of The Ohio State University or any of their affiliates. Although The Ohio State University believes that the information contained in this publication has been obtained from, and is based upon, sources The Ohio State University believes to be reliable, The Ohio State University does not guarantee its accuracy, and it may be incomplete or condensed. The Ohio State University makes no representation or warranties of any kind whatsoever in respect of such information. The Ohio State University accepts no liability of any kind for loss arising from the use of the material presented in this publication.